

Esi Profile

Engineering science institute for training

TABLE OF CONTENTS

1.0	Overview and Mission	1
2.0	Authenticity of the Courses and Facilities	2
3.0	Training Methodology	3
4.0	Esi Teams – Management and Trainers	10
5.0	Esi's National & International Accreditations & Other Partnerships	11
5.1	Technical and Vocational Training Corporation (TVTC)	12
5.2	Saudi Council of Engineers (SCE)	13
5.3	Project Management Institute (PMI)	14
5.4	Pearson Vue	15
5.5	Certiport	16
5.6	Autodesk	17
5.7	CompTIA	18
5.8	Professional Evaluation and Certification Board (PECB)	19
5.9	OSHAcademy	20
5.10	NEBOSH	21
5.11	Saudi Business Machines (SBM)	22
5.12	The KPI Institute	23
5.13	Amazon Web Services (AWS)	24
5.14	International Islamic College (Kolej Islam Antarabangsa)	25
5.15	King Abdulaziz University, Jeddah, Saudi Arabia	26
5.16	Imam Mohammad Ibn Saud Islamic University (IMSIU)	27
5.17	Chartered Financial Analyst (CFA)	28
5.18	Microsoft	29
5.19	Oracle	30

TABLE OF CONTENTS

6.0	<i>Building Information Modeling (BIM) Solution at Esi</i>	31
7.0	<i>Clients - Corporate Training</i>	32
8.0	<i>Broad Divisions of Training Courses</i>	33

CHAIRMAN'S MESSAGE



Engineering Science Institute for Training (Esi) is **ISO 9001:2015** certified Training Institute and its aspiration is to efficiently provide international standard training courses in the field of Engineering, Construction Management, Information Technology (IT), Project Management, Contract Management, Health, Safety and Environment (HS&E), Industrial Trades, etc. as these sectors are vital and play a pivotal role in on-going activities and development projects of the Kingdom of Saudi Arabia.

Esi is continuously endeavoring to engage top professional instructors to conduct the training courses to efficiently fulfill the prevailing demands and the trainees shall effectively accomplish their goal of career development and the organizations shall be adequately benefitted with the corporate training courses. All Esi's courses are being conducted under the supervision of the Technical and Vocational Training Corporation (TVTC) of Saudi Arabia and Saudi Council of Engineers. Further, it has obtained accreditations and partnerships of national and internationally famed institutes/organizations and Esi is Examination Centers for several type of tests/examinations.

Esi has successfully completed several vital training courses and able to gain vendor registration of many top entities as its corporate clients. Details of all these are provided in the subsequent sections of this Profile, and the Courses' Program Guides.

Based on Esi's competence, diversified and progressive experience, I firmly commit to all the concerns that we shall carry-out all the courses as outlined in this profile and other documents, in a true professional manner for their complete satisfaction.

Engr. Abdulrahman Alsuhaibani

Chairman

Engineering Science Institute for Training (Esi)

1.0

OVERVIEW AND MISSION

Esi is an ISO 9001:2015 Certified Training Institute and its aim is to train the aspirants to:

- a.** Provide high standard, globally recognized and certified training courses in all disciplines of Engineering, Information Technology (IT), Architecture, Project Management, Construction Management, Contract Management, Quantity Surveying, Health, Safety & Environment (HS&E), Quality Control, AutoCAD Drafting, Industrial Trades, etc.
- b.** Enhance individual skills, knowledge and professionalism to pursuit their career development efficiently. As corporate trainings to the Public and Private Entities, elevate their employees' standard to match with the latest technology and advancement in all the aforementioned training courses.
- c.** Classroom (Face-to-Face) at its premises, hotels and at the venues of Clients and Online Training Courses to provide with maximum benefits to the trainees at competitive fee.

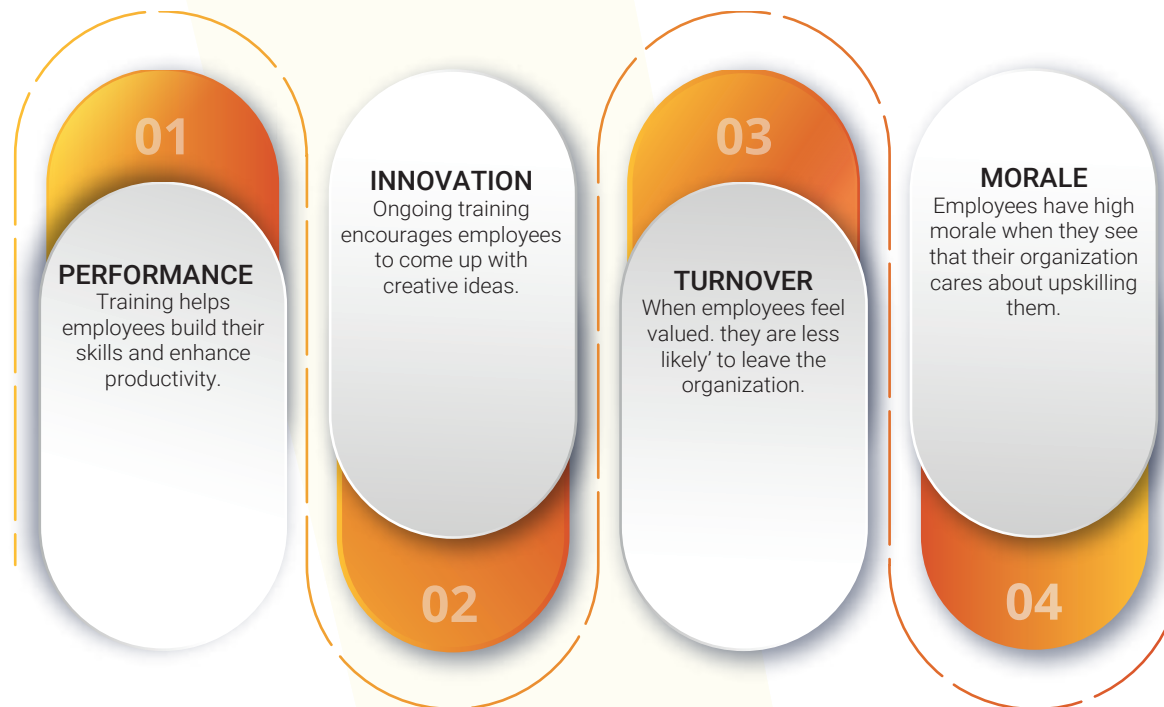
2.0 AUTHENTICITY OF THE COURSES AND FACILITIES

- a.** Most of the Esi's Training Courses are certified from its national and international accredited organizations and institutes. The other courses which are customized by Esi are as per international standards and the current demand of market.
- b.** The training courses are being conducted under the supervision of Technical & Vocational Training Corporation (TVTC) of Saudi Arabia and Saudi Council of Engineers (SCE).
- c.** The Training Courses that Esi is conducting cover from basic courses to beginners for securing appropriate placement up to top officials to revive and enhance their skills for their career development.
- d.** Esi is centrally located, just beside to Headquarters of Saudi Telecom Company (STC), Mursalat, Riyadh, Kingdom of Saudi Arabia.
- e.** Esi classrooms and auditorium are well furnished, spacious and outfitted with modern learning and teaching equipment and aids.
- f.** The workshops and laboratories are equipped with latest equipment and learning aids to facilitate to effectively perform the theoretical and practical sessions of training courses.

3.0 TRAINING METHODOLOGY

Esi functioning under the supervision of the Technical and Vocational Training Corporation (TVTC) and the Saudi Council of Engineers (SCE). Esi has carefully considered the prevailing skills' demand of the clients and trainees, accordingly formulates and conducts its training courses.

Considering the facts that organizations and individual devote their time and money for developing and enhancing the skillset of the trainees for better performance, enhanced efficiency for professional satisfaction. Esi is effectively undertaking in all its training courses as per the top four reasons for which the organizations and the individual trainees depute their resources to training are:



3.0 TRAINING METHODOLOGY

Therefore, we focus on every aspect of training right from its need analysis till post-training benefit realization. The Esi end-to-end training cycle consists of:



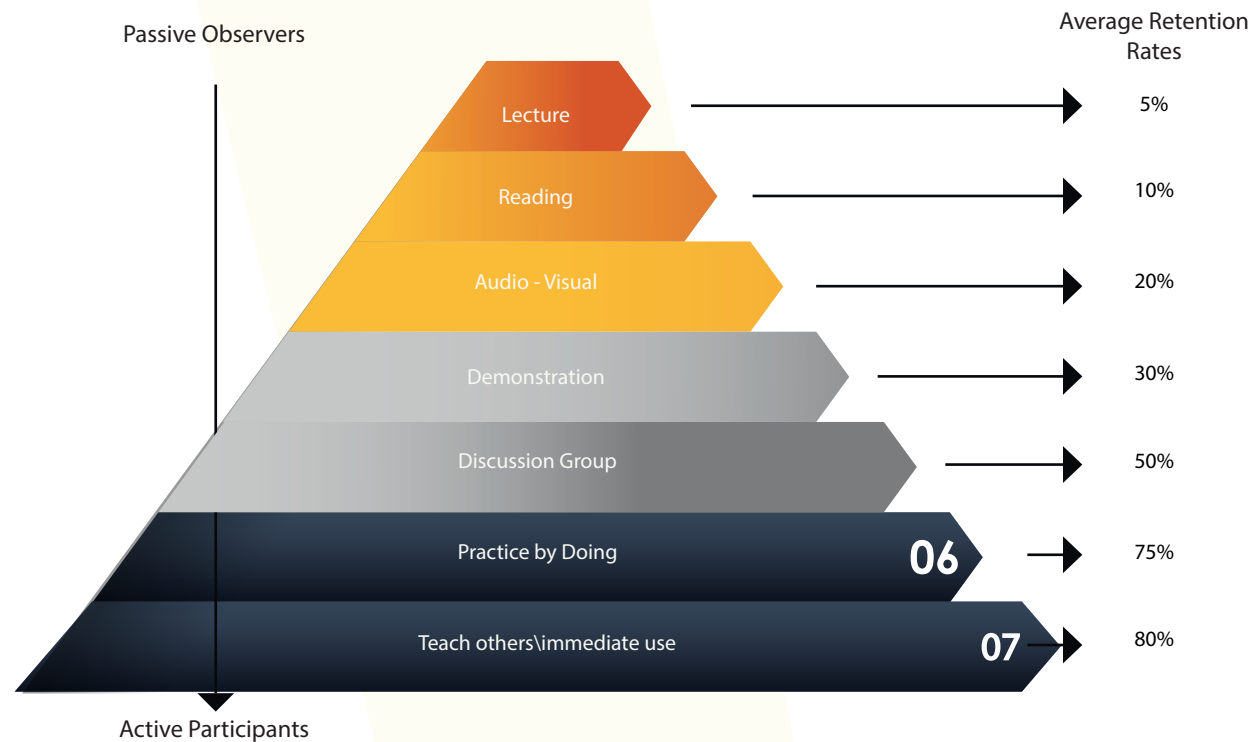
3.0 TRAINING METHODOLOGY

For “Training Development”, Esi has sub-divided into “Training Content Design” and “Effective Training Methods”. As for the convenience of the trainees’ future reference, the Training Kits (Training Manuals, Handouts, Case Studies, etc.) are being efficiently prepared by Esi.



3.0 TRAINING METHODOLOGY

Esi employ the best state-of-art delivery methodology for maximum Knowledge Transfer to the trainees. The industry statistics indicate the below reception percentage through various methodologies.



3.0 TRAINING METHODOLOGY

Esi exerts all the requisite efforts to assess the reception ability of each trainee and accordingly customize the course to achieve the organizational goal.

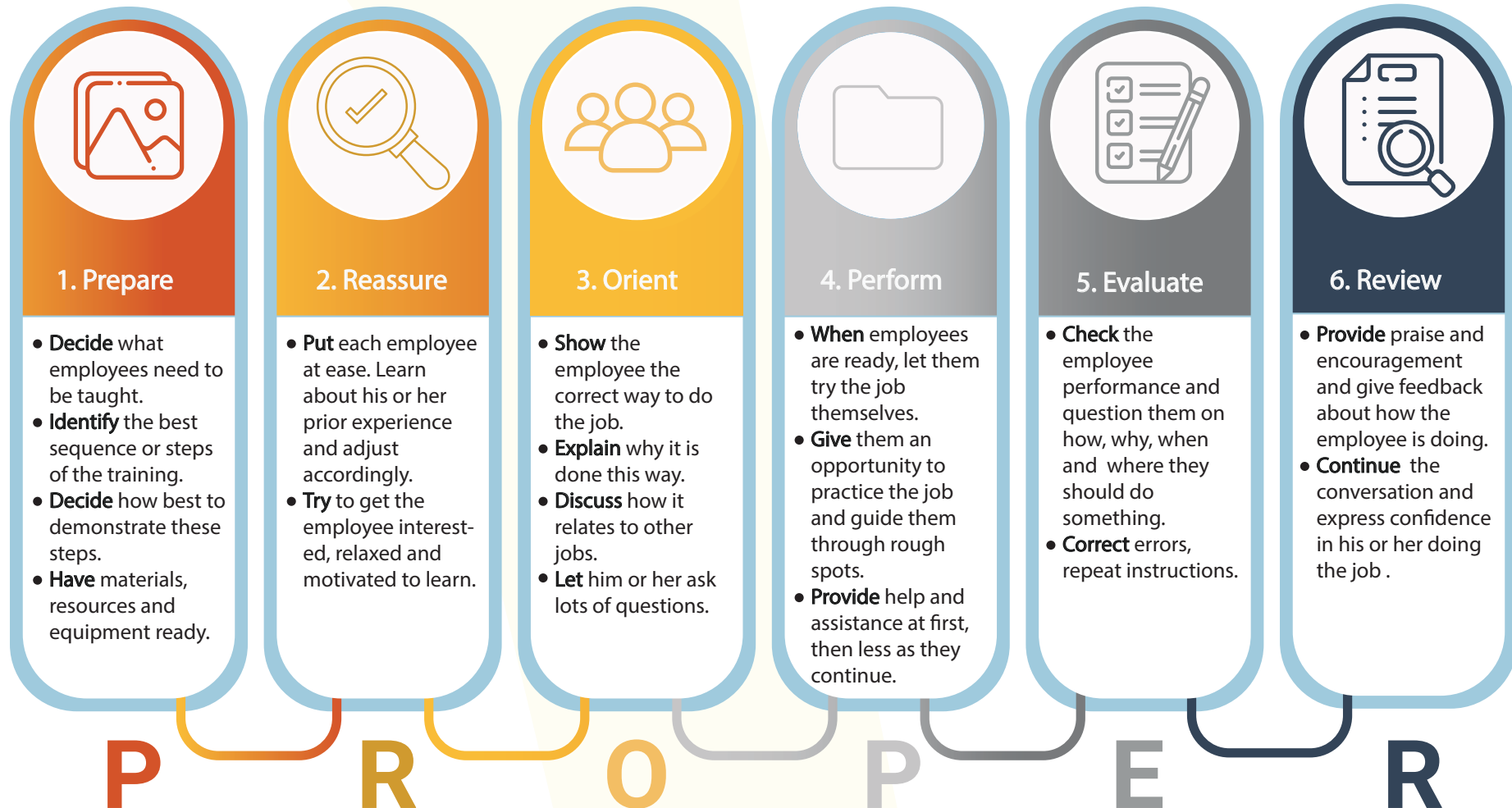
Esi is well versed in all types of trainings. The appropriate methodology from the following or a combination of few is adopted depending upon the scope of the training:



Esi adopts Blended learning, which is a formal education program in which face-to-face classroom methods are combined with computer-mediated activities. The terms ***“blended learning,” “hybrid learning,” “technology-mediated instruction,” “web-enhanced instruction,”*** and ***“mixed-mode instruction”*** are often used interchangeably.

3.0 TRAINING METHODOLOGY

Esi follows the industry best practice of “PROPER” methodology (1. Prepare, 2. Reassure, 3. Orient, 4. Perform, 5. Evaluate, 6. Review) to fulfill the expectation of organization and the trainees as well.



3.0 TRAINING METHODOLOGY

Esi follows the Kirkpatrick Model of Training Evaluation which consists of four levels:

1. **Reaction**—how well do learners like the learning process?
2. **Learning**—what did the students learn?
3. **Behavior**—what changes resulted because of the training?
4. **Results**—what are the tangible benefits of the lesson plans?



4.0

ESI TEAMS – MANAGEMENT AND TRAINERS

- a.** For efficient management, Esi always pursuit to have on board an expert team of Management.
- b.** To achieve the best result of trainings and for the benefit of the trainees, Esi has engaged highly competent, dedicated professional Trainers from across the globe.
- c.** Esi's Trainers are professional and possessing comprehensive theoretical and practical experience and they are Doctorates or Master Degree holders.
- d.** Esi has a vast and dedicated team of more than 70 teaching and management staff.

5.0 ESI'S NATIONAL & INTERNATIONAL ACCREDITATIONS & OTHER PARTNERSHIPS

Esi has Accreditations, other Training Partnerships and Examination Centers of the following reputed national and international organizations:



5.1 Technical and Vocational Training Corporation (TVTC)

Technical and Vocational Training Corporation (TVTC) is a Saudi Government Agency concerned with technical and vocational training in the Kingdom of Saudi Arabia. TVTC is responsible for preparing, reviewing and developing the training policies and plans, qualifying and developing technical and professional trainers, designing and implementing training programs, licensing and supervising the private sector for trainings, determining its technical standards and establishing strategic partnerships with training institutions in the public and private sectors.

Esi is a recognized institute of TVTC and functioning under its supervision. The Trainig Certificates issued by Esi are duly endorsed by TVTC. For complete details of TVTC, please visit its Website: **<https://www.tvtc.gov.sa>** or contact us at: **info@esi.edu.sa**





5.2 Saudi Council of Engineers (SCE)

It is a Saudi Government scientific vocational council that aims at developing the engineering and technical professions. Its implement criteria for practicing and developing the profession including license terms, setting rules and tests required to obtain vocational degrees, preparing studies and researches, organizing courses, holding seminars and conferences related to the career, as well as providing technical advice as per its field of specialty according to the regulations set by the council's board members.

Esi is an approved institute of SCE, operating under its supervision. All Esi's Engineering and Technical Courses are as per the criteria of SCE. Further, Esi can recommend and conduct Seminars and Workshops under sponsorship of SCE. For complete details of SCE, please visit its Website: <https://www.saudieng.sa> or contact us at: info@esi.edu.sa





5.3 Project Management Institute (PMI)

Project Management Institute (PMI) is the world's leading professional association for millions of project professionals and change makers worldwide. It is world's leading authority on project management. Esi is an Authorized Training Partner (ATP) of PMI, thus, it is a certified PMI institute to conduct all the training courses of PMI and the most prospective and certified courses of PMI that Esi is conducting as its ATP are the followings:



Project Management Professional



CAPM®: Certified Associate in Project Management



PMI-PBA® Professional in Business Analysis



PgMP® Program Management Professional



PMI-RMP®: Risk Management Professional



PMI-SP®: PMI Scheduling Professional



PMI Project Management Ready™



PfMP®: Portfolio Management Professional



5.4 Pearson Vue

Esi has a Partnership with Pearson VUE as its .Authorized Test Center, its USA based company. Pearson VUE has about 5,600 in 188 countries Examination Centers around the world. About 15 Million candidates take annually in 47 languages across the world. For complete details of Pearson Vue, please visit its Website: <https://www.home.pearsonvue.com> or contact us at: info@esi.edu.sa





5.5 Certiport

Esi has a Partnership with Certiport as its .Authorized Testing Center. Certiport exams are delivered through network of over 14,000 Certiport Authorized Testing Centers worldwide. Certiport delivers more than three million exams each year in 148 countries in 26 languages.

For complete details of Certiport, please visit its Website: <https://www.certiport.pearsonvue.com> or contact us at: info@esi.edu.sa





5.6 Autodesk

Esi has been Authorized Training Partner (ATP) of Autodesk, as an ATP, Esi is authorized to conduct all the training courses of Autodesk. For complete details of Autodesk and all its training courses, please visit its Website:

<https://www.autodesk.com> or contact us at: ***info@esi.edu.sa***

Autodesk, Inc. is an American multinational software corporation that makes software products and services for the architecture, engineering, construction, manufacturing, media, education, and entertainment industries. AutoCAD, which is the company's flagship computer-aided design (CAD) software and Revit software are primarily used by architects, engineers, and structural designers to design, draft, and model buildings and other structures. Autodesk software has been used in many fields, and on projects from the One World Trade Center to Tesla electric cars.





5.7 CompTIA

The Computing Technology Industry Association (CompTIA) is an American non-profit trade association, issuing professional certifications for the Information Technology (IT) industry and it is one of the IT industry's top associations. CompTIA issues vendor-neutral professional certifications in over 120 countries and so far over 2.2 million people have earned CompTIA certifications. Esi is an Authorized Training Partner (ATP) of CompTIA, therefore, it is conducting all the training courses offered by CompTIA. For complete details of CompTIA and all its training courses, please visit its Website: <https://www.comptia.org> or contact us at: info@esi.edu.sa

Esi through its certified trainers are conducting all the certified training courses of CompTIA and the most notable courses of it are:



CompTIA A+



NETWORK+



SECURITY+



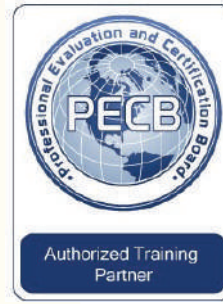
Server+



Cloud+



CYSA+ (Cyber Security Analyst)



5.8 Professional Evaluation and Certification Board (PECB)

Professional Evaluation and Certification Board (legal name "PECB Group Inc.") is a certification body which provides education and certification under ISO/IEC 17024 for individuals on a wide range of disciplines. PECB help professionals and organizations are committed to provide valuable education, evaluation and certification against rigorous internationally recognized standards. Esi has been Authorized Training Partner (ATP) of PECB, therefore, its certified trainers of PECB are conducting all the training courses offered by PECB. For complete details of PECB and all its training courses, please visit its Website: <https://www.pecb.com> or contact us at: info@esi.edu.sa
Currently, the following vital courses of PECB are being conducting by Esi:



PECB Certified ISO 9001:2015 Introduction



PECB Certified ISO 9001 Foundation



PECB Certified ISO 9001 Lead Auditor



PECB Certified ISO 9001 Lead Implementer



Authorized Training Provider

5.9 OSHAcademy

OSHAcademy provides convenient, high-quality, affordable and effective Occupational Safety and Health Training to employers, employees and job seekers around the world. It is currently has a network of more than 50 Authorized Training Providers (ATP) who provide classroom-based safety and health training courses across the world.

Esi has been Authorized Training Partner (ATP) of OSHAcademy, therefore, it is arranging and conducting all the training courses offered by OSHAcademy. For complete details of OSHAcademy, and all its training courses, please visit its Website: <https://www.oshatrain.org> or contact us at: info@esi.edu.sa



5.10 NEBOSH

NEBOSH (National Examination Board in Occupational Safety and Health), it is internationally recognized for safety and environmental professionals as well as individuals at all levels in the workplace. NEBOSH qualified trainees are highly respected by public and private sectors.

Since its inception over 400,000 people from around the world have gained a NEBOSH qualification. Tens of thousands join their number every year, studying at its 600 Learning Partners in 132 countries. Esi has been Authorized Learning Partner (ALP) of NEBOSH, therefore, it is arranging and conducting all the training courses offered by it. For complete details of NEBOSH and all its training courses, please visit Website: <https://www.nebosh.org.uk> or contact us at: info@esi.edu.sa



**NEBOSH National
General Certificate**

**Protect your workers,
protect your profits**

Find out about our courses



**LEARNING
PARTNER**



5.11 Saudi Business Machines (SBM)

Esi has a Memorandum of Understanding (MoU) with Saudi Business Machines (SBM). SBM is the General Marketing and Services Representative of internationally highly reputed IBM World Trade Corporation in Saudi Arabia and it is the Kingdom's leading provider of end-to-end enterprise information technology and telecommunications solutions. In accordance to the MoU, Esi is authorized to submit bids for training tenders, marketing, conducting and organizing all the Certified Training Courses are being offered by SBM and they are:

1. AI & Machine Learning	2. Big Data	3. Data Science & Business Analytics
4. Digital Marketing	5. Business and Leadership	6. Agile and Scrum
7. IT Service and Architecture	8. Project Management	9. Quality Management
10. Cloud Computing	11. Cyber Security	12. DevOps
13. Software Development		

For more information of SBM, its Courses and their details, please visit website: <https://www.sbm.com.sa/content/overview> or contact us at info@esi.edu.sa



THE KPI INSTITUTE

5.12 The KPI Institute

Esi has a **Memorandum of Understanding (MoU)** with the KPI Institute. The KPI Institute is a leading global research institute specialized in business performance and its Headquarters is in Melbourne, Australia. The KPI Institute is conducting its training courses in 54 countries across 6 continents. Currently, the KPI Institute is considered the global authority on Key Performance Indicators (KPIs) research and education. It developed the first KPI Management Framework and operates www.smartKPIs.com

In accordance to the MoU, Esi is authorized to submit bids for training tenders, marketing, conducting and organizing all the Certified Training Courses are being offered by the KPI in Saudi Arabia. Some of the notable **Certified Professional and Practitioner Courses of KPI accredited by CPD in the following Domains:**



CERTIFIED KPI PROFESSIONAL

CERTIFIED DATA ANALYSIS PROFESSIONAL

PERFORMANCE MANAGEMENT PROFESSIONAL

CERTIFIED BENCHMARKING PROFESSIONAL

For more information of the KPI Institute, all its Courses and their details, please visit website: <https://kpiinstitute.org> or contact us at info@esi.edu.sa



5.13 Amazon Web Services (AWS)

Amazon Web Services (AWS) provides cloud computing platforms and APIs to individuals and public and private entities. These cloud computing web services provide a variety of basic abstract technical infrastructure and distributed computing building blocks and tools. AWS's version of virtual computers emulates most of the attributes of a real computer, including hardware central processing units (CPUs) and Graphics Processing Units (GPUs) for processing; local/RAM memory; hard-disk/SSD storage; a choice of Operating Systems; networking; and pre-loaded application software such as Web Servers, Databases and Customer Relationship Management (CRM).

Esi is an Authorized Training Partner (ATP), thus, it is providing all the training courses that are available at AWS. For complete details of AWS, please visit its Website: <https://www.awsamazon.com> or contact us at: info@esi.edu.sa



5.14 International Islamic College (Kolej Islam Antarabangsa)

The International Islamic College (IIC) is a private college located in Taman Batu Muda, Kuala Lumpur, Malaysia. The college was established in 2000 as a private higher education institution. International Islamic College is one of the private higher education institutions in Malaysia

IIC has pre-university and post graduate courses approved by the Ministry of Higher Education, Malaysia, thus, as per the agreement with ICC, Esi is authorized to promote and organize for conducting all ICC courses. . For complete details of AWS, please visit its Website: **www.iic.edu.my** or contact us at: **info@esi.edu.sa**





5.15 King Abdulaziz University, Jeddah, Saudi Arabia

Esi has a Memorandum of Understanding (MoU) with King Abdulaziz University (KAU), Jeddah, Saudi Arabia. KAU carries the name of the establisher of Saudi Arabia, King Abdulaziz - God bless him. KAU was founded in 1387H (1967G), it is a national and one of the top and large universities in the Kingdom and its aim to is spread higher education in the Western Region of Saudi Arabia. KAU has two separate campuses one for males and another for females and it has all the major and standard faculties.

In accordance to the MoU, Esi can propose and conduct the training courses at the premises of KAU which shall be beneficial to its students. For complete details of KAU, please visit its Website: <https://www.kau.edu.sa> or contact us at: info@esi.edu.sa



5.16 Imam Mohammad Ibn Saud Islamic University (IMSIU)

Esi has a Memorandum of Understanding (MoU) with Imam Mohammad Ibn Saud Islamic University (IMSIU), Riyadh, Saudi Arabia. IMSIU Imam Mohammad Ibn Saud Islamic University, was established in the year 1373 AH, 1953 CE, it developed radically until it became a university in the year 1394 - 1974 AD. IMSIU also offering various study programs at various levels, whether at the level of scientific institutes (general education) or at the bachelor's and postgraduate levels (higher education).

IMSIU has 14 colleges, 3 institutes for postgraduate studies, several support deanships, research and service centers and scientific research chairs, in addition to a university branch in Al-Ahsa Governorate in the Eastern Province of the Kingdom of Saudi Arabia.

In accordance to the MoU, Esi can propose and conduct the training courses at the premises of IMSIU which shall be beneficial to its students. For complete details of IMSIU, please visit its Website: <https://www.imamu.edu.sa> or contact us at: info@esi.edu.sa



5.17 Chartered Financial Analyst (CFA)

Esi has a Partnership with the Chartered Financial Analyst (CFA) as its .Authorized Examination Center. For complete details of CFA, please visit its Website: <https://www.cfainstitute.org> or contact us at: info@esi.edu.sa





5.18 Microsoft

Esi is a Network Partner of Microsoft, thus, it has the following provisions:

- **Key to accessing the tools and resources available to Microsoft partners.**
- **Access to the powerful ecosystem where you can connect with other partners through the Microsoft Partner Community.**
- **Webinars and training from subject matter experts designed to help prepare partners with the skills necessary for success.**
- **GTM resources that help customize marketing materials to expand reach to a broader set of customers.**

For complete details of Microsoft, please visit its Website: <https://www.microsoft.com> and for the provisions of Esi partnership with it, contact us at: info@esi.edu.sa



ORACLE

5.19 Oracle

Esi is an Oracle Partner Network (OPN) and is designated to accelerate value realization for customers. The OPN leverage the powerful partnership to deliver successful outcomes for Oracle customers in their digital transformation journey. The Partner benefits increase incrementally with each ascending program tier. Also, the OPN is a channel partner program that provides resources and benefits for businesses that want to collaborate with Oracle. For complete details of Oracle, please visit its Website: <https://www.oracle.com> and for the provisions of Esi partnership with it, contact us at: info@esi.edu.sa



6.0 BUILDING INFORMATION MODELING (BIM) SOLUTION AT ESI

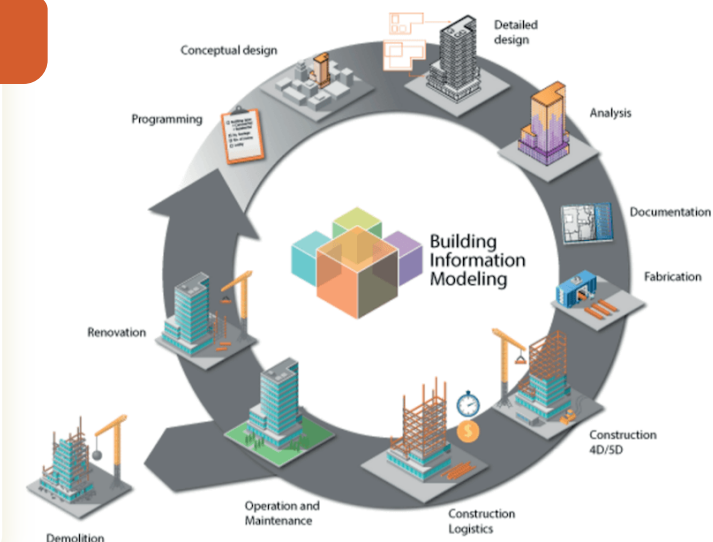
Introduction

Esi is an Authorized Training Partner, Certification and Examination Center of Autodesk Inc. and it makes software for architecture, engineering, construction, manufacturing, etc. Autodesk is the leading software developer of BIM in the world, thus, the BIM's trainers at Esi are certified from Autodesk. All the core BIM's training courses are being conducted at Esi as per the curriculum and under the supervision of Autodesk. Esi has a vast experience in BIM's training, implementation and consultancy and in these services, it has been serving many top and reputed clients.

BIM Training Courses at Esi

BIM Training Courses have been classified into "Bundles" and the prominent Bundle Trainings that Esi is conducting are as follows:

S.No.	Course Description
1	BIM Modeler Bundle
2	BIM Architecture Bundle
3	BIM Structural Bundle
4	BIM Mechanical, Electrical & Plumbing (MEP)
5	BIM Project Planning & Construction Management Bundle
6	BIM Quantity Survey Bundle
7	BIM Coordinator Bundle
8	BIM Management Bundle



7.0 ESI CLIENTS - CORPORATE TRAINING

Esi has public and private sectors' Clients for Corporate Training and notable of them are as follows:



8.0

BROAD DIVISIONS OF TRAINING COURSES

The major divisions of the Training Courses that Esi is undertaking are as follows:

- a. All Disciplines of Engineering
- b. All types Information Technology (IT)
- c. Architecture and AutoCAD Drafting
- d. Contract Management and Quantity Survey
- e. Health, Safety & Environment (HS&E)
- f. Project Management
- g. Construction Management
- h. Quality Management
- i. Building Information Modeling (BIM)
- j. Heating, Ventilation and Air Conditioning (HVAC)
- k. Major Industrial Trades

Note: Details of all the above courses are provided in “**Program Guide of Esi all Training Courses and their Policies**” and on Esi Website.